



THE WHITAKER
MUSEUM & ART GALLERY

The Whitaker Collection Time Responses

What Time is Now? New Temporalities in an Era of Endings – 15 July



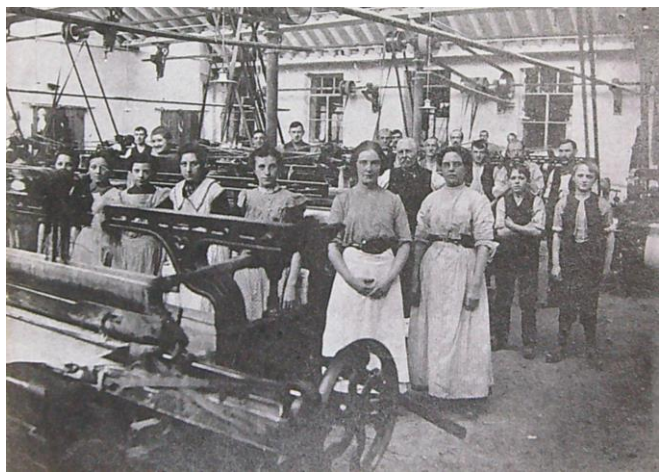
Ruth Murray, Floyen, 2021

The Lover's Letter Box- Baxter's Print- After a painting of Jessie McLeod. Companion to 'The Day before marriage' published August 30th 1856.



Victorian Genre Paintings- listening







Sophy King, Moss

Nellie the Elephant





Clock on Bank Street

Questions?

- Gaynor Seville,
 - Creative Director
 - Gaynor@thewhitaker.org
- Gina Warburton
 - Collections Curator
 - Gina@thewhitaker.org
- Website - www.thewhitaker.org
- Virtual tour on our website - [The Whitaker Museum - Virtual Tour \(captur3d.io\)](http://www.thewhitaker.org)

